



## Telecommunication & **Network** PRODUCTS CATALOGUE

### 慈溪市翔和通讯设备有限公司

地址: 慈溪市横河镇东畈工业区  
电话: 0574-63191191  
邮箱: sales@xianghetx.com  
网址: www.xianghetx.com  
https://cixixianghe.en.alibaba.com

#### Cixi xianghe Communication Equipment Co., Ltd.

Add: Dongfan Industrial park Henghe Town Cixi City Zhejiang Province  
Tel: +86-574-63191191  
E-mail: sales@xianghetx.com  
Website: www.xianghetx.com  
https://cixixianghe.en.alibaba.com







# COMPANY PROFILE

## 公司简介

慈溪市翔和通讯设备有限公司成立于2001年，专业生产和研制通讯网络设备。本公司是一家致力于配线架（MDF），数字配线架（DDF），光纤配线架（ODF），综合布线等产品的开发和销售。主要产品有：卡接模块、保安排、保安单元、不锈钢背架。综合布线产品有：配线架类、跳线架类、卡接刀、FTTH光缆分线箱、FTTH光纤入户敷设辅材等通信产品。公司实力雄厚，设有技术部，且拥有一批经验丰富的专业技术人员，专注新产品的研发与生产。

慈溪市翔和通讯设备有限公司位于浙江省慈溪市横河镇东畝工业区，公司距宁波栎社机场越1个小时路程，杭州湾大桥半个小时路程，毗邻宁波北仑港和上海国际港口，优越的地理环境，发达的交通网络，为国内外货物运输提供极大的便利。

本公司有多种知识结构的MDF产品供应，从供生产企业配套到供电信业务使用；本公司还与国内知名ODF厂商建立了配套合作关系，部分产品远销国外。

公司一直奉行质量第一，信誉至上的宗旨，和具有不断开拓创新的精神。今天，翔和人真诚希望与各位同仁携手合作，共创辉煌！

Cixi Xianghe Communication Equipment Co., Ltd is a hi-tech enterprise which specializes in optical communication equipment products. Our company was founded in 2001 occupied area 15000 square meters with over 150 workers, 15 product lines. Our design team has rich experience in developing and designing products, manufacturing and constructing. Our company has a full set of testing equipment and our testing capability is in the forefront of the same industry. All our products have passed the detection of Ministry of Information Industry, with certificate of TLC and network access of broadcast. We have already passed the verification of International Quality System ISO9001 organized by TLC.

We specialize in various optical communication products of FTTH, network systems. The main products of our company include GFX series of Fiber Optic Distribution Box; series of Fiber Optic Splice Box, fiber optic patch panel etc. Our products have been sold to more than 15 countries and regions, especially in Europe, United States, the Middle East and Southeast Asia.

Our company always observes the principle of “Quality First, Customer Upper most.” developing new products persistently in order to provide better products and service for customers. With the advanced technology, better products and good service. We believe we will make great contribution to optical communication in the world.



# Contents | 目录



Fiber Optic Distribution Box  
P01-13



Fiber Optic Splice Closure  
P14-15



Fiber Optic Termination Box  
P16-18



Accessories  
P19-22



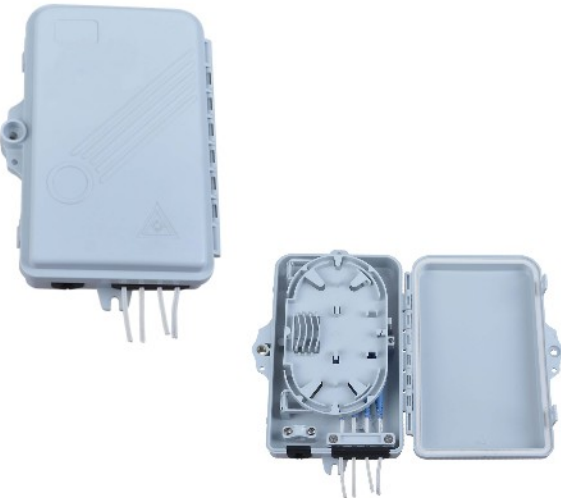
XHF-001



2 Cores Fiber Distribution Box

- Size: 200x130x40mm
- Max Capacity: ≤2cores
- Installation Method: Wall-mounted
- Waterproof Level: Ip65

XHF-002



4 Cores Fiber Distribution Box

- Size: 200x130x40mm
- Max Capacity: ≤4cores
- Installation Method: Wall-mounted
- Waterproof Level: Ip65

XHF-003



6 Cores Fiber Distribution Box

- Size: 200x130x40mm
- Max Capacity: ≤6cores
- Installation Method: Wall-mounted
- Waterproof Level: Ip65

XHF-004



8 Cores Fiber Termination Box

- Size: 245x130x50.5mm
- Max Capacity: ≤8cores
- Installation Method: Wall-mounted
- Waterproof Level: IP65

XHF-005



8 Cores Fiber Distribution Box

- Size: 230x195x55mm
- Max Capacity: ≤8cores
- Installation Method: Wall-mounted or Pole-mounted
- Waterproof Level: Ip65

XHF-006



8 Cores Fiber Distribution Box

- Size: 220x200x65mm
- Max Capacity: ≤8cores
- Installation Method: Wall-mounted or Pole-mounted
- Waterproof Level: Ip65

XHF-007



8 Cores Fiber Termination Box

- Size: 240x210x65mm
- Max Capacity: 1pc 1x8 cassette PLC
- Installation Method: Wall-mounted or Pole-mounted
- Waterproof Level: Ip65

XHF-008



12 Cores Fiber Distribution Box

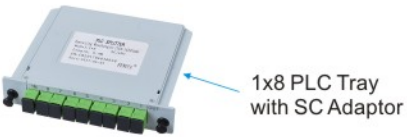
- Size: 240x210x65mm
- Max Capacity: ≤ 12cores
- Installation Method: Wall-mounted or Pole-mounted
- Waterproof Level: Ip65

XHF-009



8 Cores Fiber Distribution Box

- Size: 225x195x70mm
- Max Capacity: 1pc 1x8 cassette PLC
- Installation Method: Wall-mounted or Pole-mounted
- Waterproof Level: Ip65



The Upper Slot For Fiber Cable

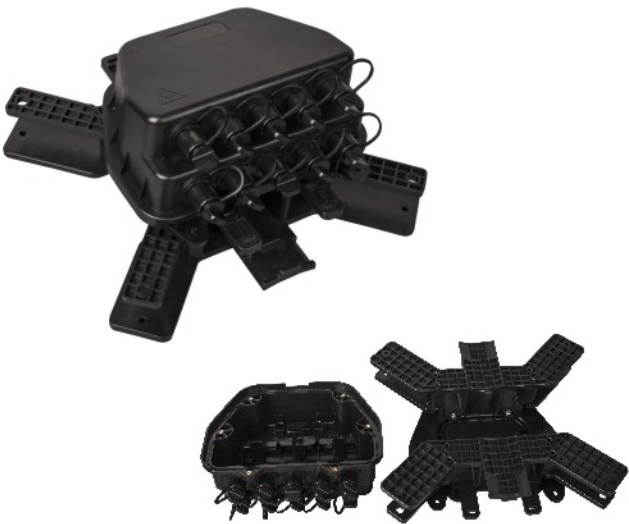
XHF-010



12 Cores Fiber Distribution Box

- Size: 225x195x70mm
- Max Capacity: ≤ 12cores
- Installation Method: Wall-mounted or Pole-mounted
- Waterproof Level: Ip65

XHF-011



10 Cores Fiber Distribution Box

- Size: 210x204x88mm
- Max Capacity: ≤ 10cores
- Installation Method: Wall-mounted or Pole-mounted or Aerial-mounted
- Waterproof Level: IP65
- With 10pcs Huawei SC Simplex Adapter

XHF-012



16 Cores Fiber Distribution Box

- Size: 240x208x117mm
- Max Capacity: ≤ 16cores
- Installation Method: Wall-mounted or Pole-mounted
- Waterproof Level: IP65
- With 16pcs Huawei SC Simplex Adapter

Huawei SC Adaptor



XHF-013



16 Cores Fiber Distribution Box

- Size: 300x220x100mm
- Max Capacity: ≤ 16cores
- Installation Method: Wall-mounted or Pole-mounted
- Waterproof Level: IP65
- For Both Cable Gland and Rubber Input
- For Both Cassette PLC and Pigtail PLC

XHF-014



16 Cores Fiber Distribution Box

- Size: 300x230x100mm
- Max Capacity: ≤ 16cores
- Installation Method: Wall-mounted or Pole-mounted
- Waterproof Level: IP65
- For Both Cable Gland and Rubber Input
- For Both Cassette PLC and Pigtail PLC

XHF-015



16 Cores Fiber Distribution Box

- Size: 287.6\*172.2\*103mm
- Max Capacity: The box can load 2pcs 1x8 cassette PLC
- Installation Method: Wall-mounted or Pole-mounted
- Waterproof Level: IP65

XHF-016



16 Cores Fiber Distribution Box

- Size: 287.6\*172.2\*103mm
- Max Capacity: ≤ 16cores
- Installation Method: Wall-mounted or Pole-mounted
- Waterproof Level: IP65

XHF-017



16 Cores Fiber Distribution Box

- Size: 318x249x125.5mm
- Max Capacity: ≤ 16cores
- Installation Method: Wall-mounted or Pole-mounted
- Waterproof Level: IP65
- For Both Cassette PLC and Pigtail PLC

XHF-018



8 Cores Fiber Distribution Box

- Size: 298x230x98.3mm
- Max Capacity: ≤ 8cores
- Installation Method: Wall-mounted or Pole-mounted
- Waterproof Level: IP65
- With 8pcs Huawei SC Simplex Adapter

XHF-019



16 Cores Fiber Distribution Box

- Size: 318x249x125.5mm
- Max Capacity: ≤ 16cores
- Installation Method: Wall-mounted or Pole-mounted
- Waterproof Level: IP65
- For Both Cassette PLC and Pigtail PLC

XHF-022



16 Cores Fiber Distribution Box

- Size: 340x260x125mm
- Max Capacity: The box can load 2pcs 1x8 cassette PLC
- Installation Method: Wall-mounted or Pole-mounted
- Waterproof Level: IP65
- For Both Cable Gland and Rubber Input

XHF-020



16 Cores Fiber Distribution Box

- Size: 320x240x110mm
- Max Capacity: The box can load 2pcs 1x8 cassette PLC
- Installation Method: Wall-mounted or Pole-mounted
- Waterproof Level: IP65
- For Both Cable Gland and Rubber Input

XHF-023



24 Cores Fiber Distribution Box

- Size: 340x260x125mm
- Max Capacity: ≤ 24cores
- Installation Method: Wall-mounted or Pole-mounted
- Waterproof Level: IP65
- For Both Cable Gland and Rubber Input

XHF-021



24 Cores Fiber Distribution Box

- Size: 320x240x110mm
- Max Capacity: ≤ 24cores
- Installation Method: Wall-mounted or Pole-mounted
- Waterproof Level: IP65
- For Both Cable Gland and Rubber Input

XHF-024



16 Cores Fiber Distribution Box

- Size: 340x240x100mm
- Max Capacity: The box can load 2pcs 1x8 cassette PLC
- Installation Method: Wall-mounted or Pole-mounted
- Waterproof Level: Ip65



XHF-025



24 Cores Fiber Distribution Box

- Size: 340x240x100mm
- Max Capacity: ≤24cores
- Installation Method: Wall-mounted or Pole-mounted
- Waterproof Level: Ip65

XHF-026



16 Cores Fiber Distribution Box

- Size: 320x240x100mm
- Max Capacity: The box can load 2pcs 1x8 cassette PLC
- Installation Method: Wall-mounted or Pole-mounted
- Waterproof Level: IP65

XHF-027



24 Cores Fiber Distribution Box

- Size: 320x240x100mm
- Max Capacity: ≤24cores
- Installation Method: Wall-mounted or Pole-mounted
- Waterproof Level: Ip65

XHF-028



32 Cores Fiber Distribution Box

- Size: 420x320x125mm
- Max Capacity: The box can load 4pcs 1\*8 cassette PLC
- Installation Method: Wall-mounted or Pole-mounted
- Waterproof Level: IP65
- For Both Cable Gland and Rubber Input

XHF-029



48 Cores Fiber Distribution Box

- Size: 420x320x125mm
- Max Capacity: ≤ 48cores
- Installation Method: Wall-mounted or Pole-mounted
- Waterproof Level: IP65
- For Both Cable Gland and Rubber Input

XHF-030



FAT 48 Cores

- Size: 450x180x150mm
- Max Capacity: ≤48cores
- Installation Method: Wall-mounted
- Waterproof Level: Ip65

XHF-031



8 Cores Fiber Termination Box

- Size: 304x182x72mm
- Max Capacity: ≤8cores
- Installation Method: Aerial-mounted
- Waterproof Level: IP65

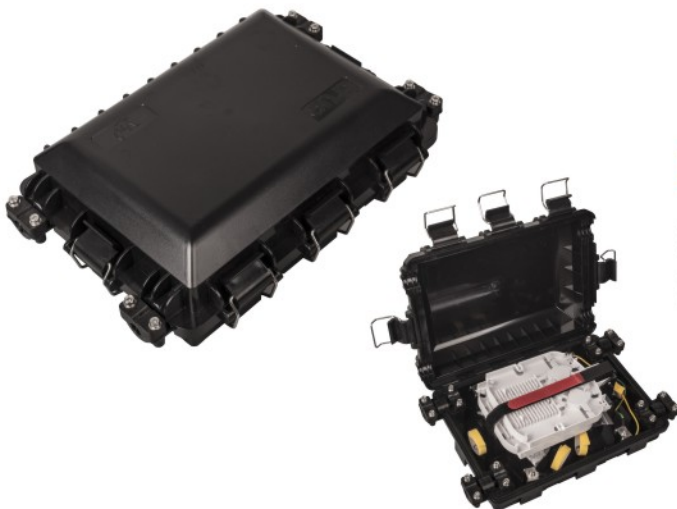
XHF-032



16 Cores Fiber Termination Box

- Size: 412x196.5x72mm
- Max Capacity: ≤16cores
- Installation Method: Aerial-mounted
- Waterproof Level: IP65

XHF-033



48 Cores Fiber Termination Box

- Size: 307x214x80mm
- Max Capacity: ≤48cores
- Installation Method: Aerial-mounted
- Waterproof Level: IP65

XHF-034



16 Cores Fiber Optic Distribution Box

- Size:290\*210\*82MM
- Material : PC+ABS
- Installation Method : Wall/pole mounted

XHF-035



16 Cores Fiber Optic Distribution Box

- Size:290\*210\*82MM
- Material : PC+ABS
- Installation Method : Wall/pole mounted

XHF-036



16 Cores Fiber Optic Distribution Box

- Size:290\*210\*82MM
- Material : PC+ABS
- Installation Method : Wall/pole mounted



XHF-037



16 Cores Fiber Optic Distribution Box

- Size:290\*210\*82MM
- Material : PC+ABS
- Installation Method : Wall/pole mounted

XHF-038



8 Cores Fiber Optic Distribution Box

- Size:290\*210\*82MM
- Material : PC+ABS
- Installation Method : Wall/pole mounted

XHF-039



16 Cores Fiber Optic Distribution Box

- Size:290\*210\*82MM
- Material : PC+ABS
- Installation Method : Wall/pole mounted

XHM-001



Dome Fiber Optic Splice Closure

- Dimension:  $\phi 100\text{mm} \times \phi 340\text{mm}$
- Cable port:2-3
- Cable Diameter:  $\phi 7-18\text{mm}$
- Capacity: 24 cores
- Material: PS



XHM-002



144 Cores Fiber Optic Splice Closure

- Size:380\*280mm
- Material : PP+GF
- Installation Method : Pole mounted or aerial hinged

XHM-003



144 Cores Fiber Optic Splice Closure

- Size:380\*280mm
- Material : PP+GF
- Installation Method : Pole mounted or aerial hinged

XHM-004



288 Cores Fiber Optic Splice Closure

- Size:500\*300mm
- Material : PP+GF
- Installation Method : Pole mounted or aerial hinged

XHM-005



288 Cores Fiber Optic Splice Closure

- Size:500\*300mm
- Material : PP+GF
- Installation Method : Pole mounted or aerial hinged

XHM-006



48 Cores Fiber Optic Splice Closure

- Size:330\*220\*105mm
- Material : PP+GF
- Installation Method : Wall mounted or aerial hinged

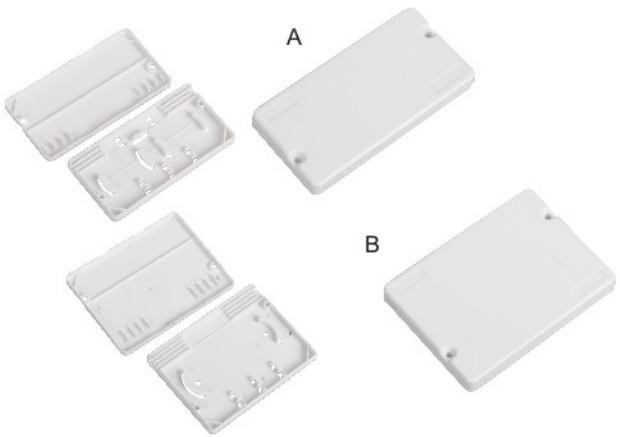
XHM-007



96 Cores Fiber Optic Splice Closure

- Size:500\*230\*110mm
- Material : PP+GF
- Installation Method : Pole mounted or aerial hinged

XHZ-001



2 Or 4 Cores Fiber Optic Termination Box

Item No	Description
XHZ-001-A	2Core FTTH Box
XHZ-001-B	4Core FTTH Box

- A Size:94\*45\*11mm
- B Size:94\*68\*11mm
- Waterproof:IP65

XHZ-002



1 Cores Fiber Optic Termination Box

Item No	Description
XHZ-002	1Core FTTH Box

- Size:120\*90\*24mm
- Box Suitable 1PC SC Simplex Adaptor
- Adapter type:SC/LC/FC
- Inlter cable:3.0x2.0mm drop cable or indoor cable

XHZ-003



2 Cores Fiber Optic Termination Box

Item No	Description
XHZ-003	2 Core FTTH Box

- Size:135\*90\*26mm
- Adapter type:SC/LC/FC
- Inlter cable:3.0x2.0mm drop cable or indoor cable



XHZ-004



2 Cores Fiber Optic Termination Box

Item No	Description
XHZ-004	2 Core FTTH Box
■ Size:100*84*25mm	
■ Adapter type:SC/LC/FC	
■ Inlter cable:3.0x2.0mm drop cable or indoor cable	

XHZ-005



1 /2 Cores Fiber Optic Termination Box

Item No	Description
XHZ-005	1/2 Core FTTH Box
■ Size:116*86*23mm	
■ Adapter type:SC/LC/FC	
■ Inlter cable:3.0x2.0mm drop cable or indoor cable	



XHZ-006



86 Fiber Optic Desktop Box

Item No	Description
XHZ-006	86 Core FTTH Box
■ Size:186 x 86 x 24mm	
■ Material:PC+ABS	

XHZ-007



Fiber Box

Item No	Description
XHZ-007	86 Core FTTH Box
■ Size:86 x 86x 20mm	
■ Material:PC+ABS	

XHZ-008



4 Cores Fiber Optic Termination Box

Item No	Description
XHZ-008	4 Core FTTH Box
■ Size:100*84*30mm	
■ Adapter type:SC/LC/FC	
■ Inlter cable:3.0x2.0mm drop cable or indoor cable	

XHZ-009



4 Cores Fiber Optic Termination Box

Item No	Description
XHZ-009	4 Core FTTH Box
■ Size:150*120*30mm	
■ Adapter type:SC/LC/FC	
■ Inlter cable:3.0x2.0mm drop cable or indoor cable	

XHR-001



1:32 Fiber Optic Splicing Tray

XHR-002



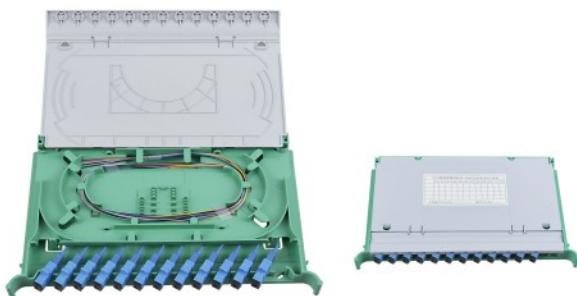
12 Cores Splicing Tray

XHR-003



12 Cores Splicing Tray

XHR-004



12 Cores Splicing Tray ( V2.0 )

XHR-005



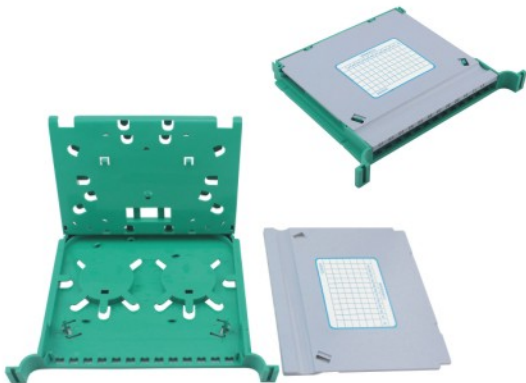
12 Cores Splicing Tray(320)

XHR-006



12 Cores Splicing Tray(V3.0)

XHR-007



12 Cores Splicing Tray(V3.0)

XHR-008



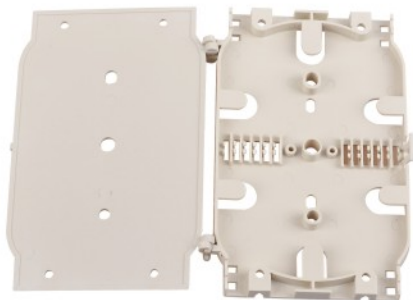
6 Cores F/O Splicing Tray

XHR-009



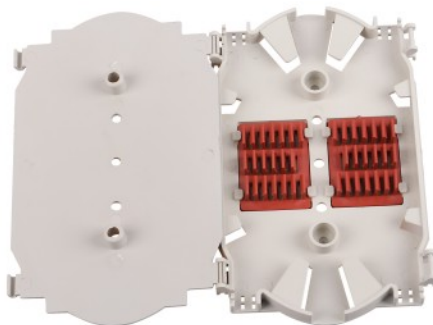
12 Cores F/O Splicing Tray

XHR-010



12 Cores F/O Splicing Tray

XHR-011



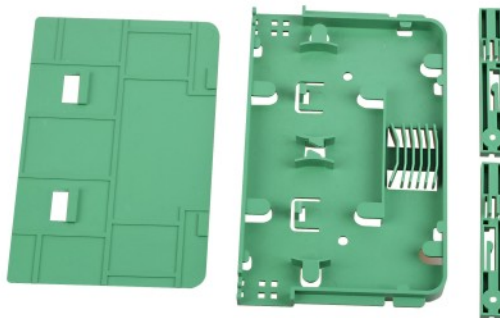
12 Cores F/O Splicing Tray

XHR-012



12 Cores F/O Splicing Tray

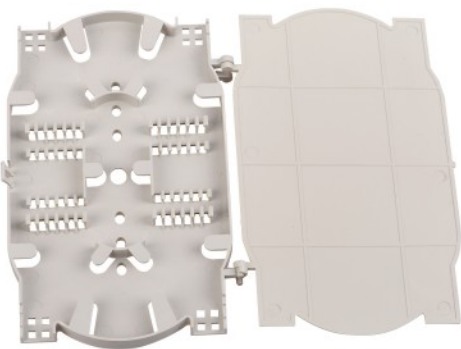
XHR-013



6/12 Cores F/O Splicing Tray

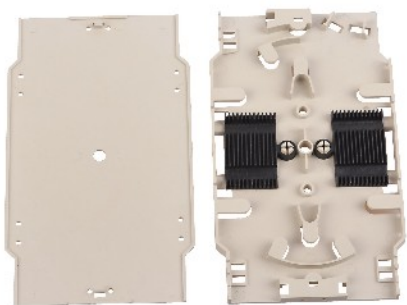


XHR-014



12/24 Cores F/O Splicing Tray

XHR-015



12/24 Cores F/O Splicing Tray

XHR-016



12/24 Cores F/O Splicing Tray

XHR-017



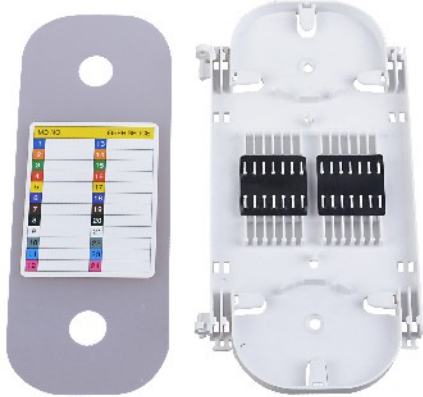
24 Cores F/O Splicing Tray

XHR-018



24 Cores F/O Splicing Tray

XHR-019



24 Cores F/O Splicing Tray

XHS-001



SC Adapter

XHS-002



SC-AP Adapter

XHS-003



SC-APC Adapter

XHS-005



SC-UPC Adapter

XHS-006



LC Adapter

XHS-007



FC-APC Adapter

XHA-001



Fiber Optic Splice Closure

XHA-002



Fiber Optic Splice Closure

XHA-003



Fiber Optic Splice Closure